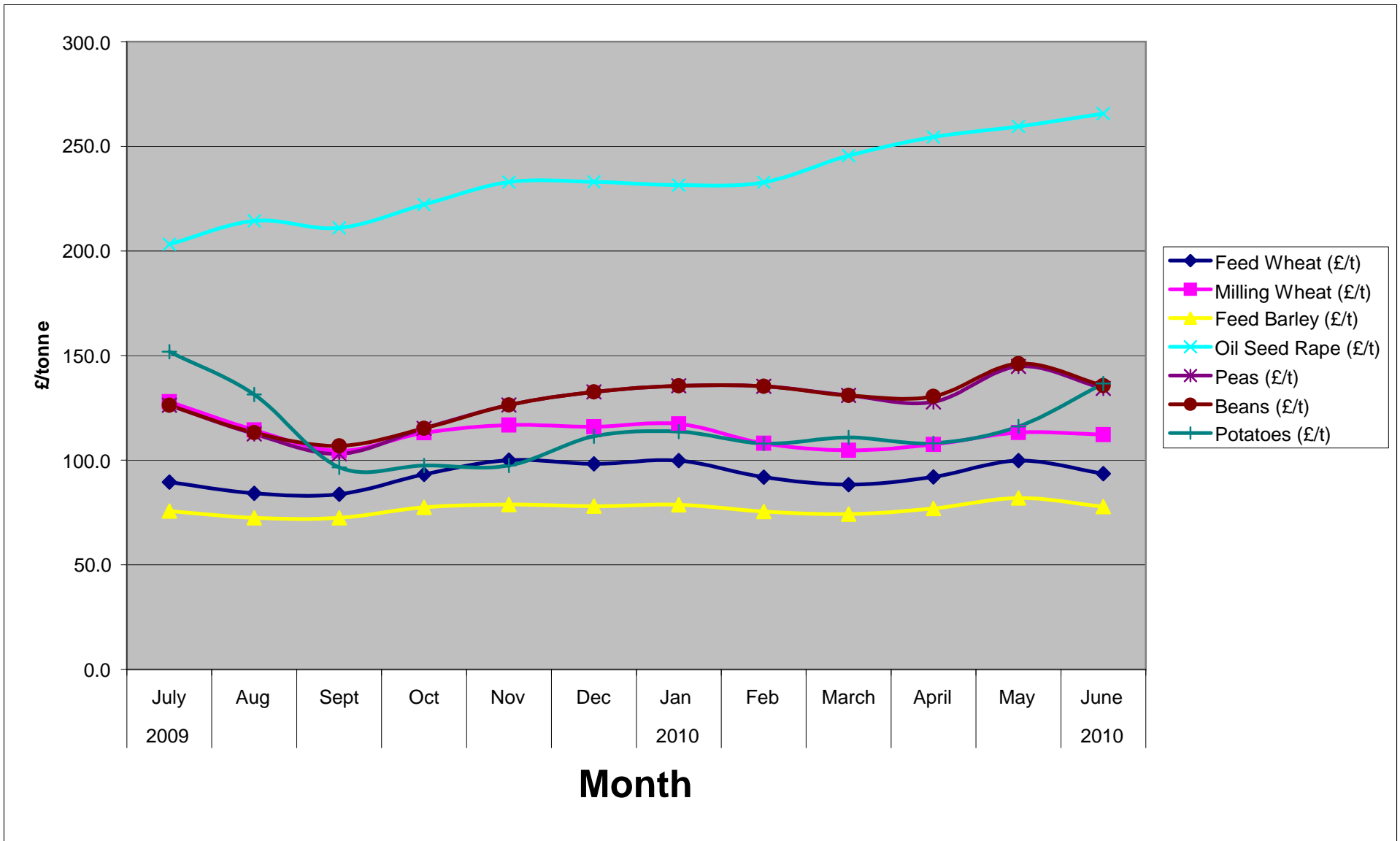


Denton Clark Monthly Summary



Type of Produce	2009									2010																										
	Jul	Last Yr	%	Aug	Last Yr	%	Sept	Last Yr	%	Oct	Last Yr	%	Nov	Last Yr	%	Dec	Last Yr	%	Jan	Last Yr	%	Feb	Last Yr	%	March	Last Yr	%	April	Last Yr	%	May	Last Yr	%	June	Last Yr	%
Feed Wheat (£/t)	89.5	92.2	-0.03	84.2	111.5	-0.24	83.7	101.8	-0.18	93.2	83.2	0.12	100	86.2	0.16	98.2	83.1	0.18	99.8	101.9	-0.02	91.9	108	-0.15	88.3	100.5	-0.12	92	100.8	-0.09	99.80	108.90	-0.08	93.6	109.9	-0.15
Milling Wheat (£/t)	127.9	147.5	-0.13	114.4	139.3	-0.18	104.5	151.5	-0.31	113.1	129.6	-0.13	116.8	131.7	-0.11	116	131.1	-0.12	117.3	144.5	-0.19	108.08	151.3	-0.29	104.7	147	-0.29	107.5	147.9	-0.27	113.20	148.40	-0.24	112.2	149.5	-0.25
Feed Barley (£/t)	75.7	77.8	-0.03	72.5	105.6	-0.31	72.5	100.3	-0.28	77.5	82.7	-0.06	78.8	83.8	-0.06	78	80.2	-0.03	78.7	91.1	-0.14	75.5	98.7	-0.24	74.2	89.7	-0.17	76.9	89.8	-0.14	82.00	91.60	-0.10	77.8	96.1	-0.19
Oil Seed Rape (£/t)	203.2	216.6	-0.06	214.4	275.9	-0.22	211	279.5	-0.25	222.2	242.5	-0.08	232.9	252.8	-0.08	233	225.0	0.04	231.4	251.3	-0.08	232.8	247.5	-0.06	245.5	241.2	0.02	254.5	240.8	0.06	259.50	274.60	-0.05	265.6	269.8	-0.02
Peas (£/t)	126.3	126.3	0.00	112.5	172.8	-0.35	103.1	159.2	-0.35	115.2	112.6	0.02	126.4	103.3	0.22	132.6	98.7	0.34	135.5	107.9	0.26	135.3	130	0.04	131	131.7	-0.01	127.8	134.1	-0.05	144.80	170.80	-0.15	134.3	176	-0.24
Beans (£/t)	126.3	126.3	0.00	113.2	172.8	-0.34	106.8	158.9	-0.33	115.2	112.1	0.03	126.4	102.8	0.23	132.6	98.2	0.35	135.5	107.8	0.26	135.3	130	0.04	131	131.7	-0.01	130.5	134.1	-0.03	146.10	175.10	-0.17	135.7	179	-0.24
Potatoes (£/t)	151.8	152.65	-0.01	131.43	144.2	-0.09	96.59	136.5	-0.29	97.43	120.6	-0.19	97.44	108.8	-0.10	111.4	112.5	-0.01	113.72	116.6	-0.02	107.94	123.1	-0.12	110.82	122.8	-0.10	108.07	131.0	-0.18	116.12	132.00	-0.12	136.66	128.7	0.06
Finished Steers R4L (p/kilo)	277.6	282.8	-0.02	277.6	266.9	0.04	286.6	262.9	0.01	284.8	284.3	0.00	284.9	281.9	0.01	286.1	278.3	0.03	288	290.6	-0.01	284.2	287.1	-0.01	279.2	286.7	-0.03	278.3	285.8	-0.03	273.10	286.40	-0.05	268.9	286.9	-0.06
Dairy Cow (£/head)	1209	1225	-0.01	1345	1271.4	0.06	1396	1631.9	-0.14	1349	1232.4	0.09	1369	1440	-0.05	1443	1121.3	0.29	1407	1391.6	0.01	1080	1489	-0.27	1188	1255	-0.05	1348	1085.0	0.24	954.00	1287.00	-0.26	1170	1172	0.00
Friesian X Bull Calves (£/head)	50.1	44.9	0.12	48.6	26.4	0.84	43.6	14.7	1.97	39.9	25.9	0.54	50.6	26.2	0.93	46.4	23.2	1.00	42	29.8	0.41	50.8	39.6	0.28	40.9	45.8	-0.11	53.8	44.1	0.22	54.20	58.30	-0.07	44.9	55.9	-0.20
Continental X Calves (£/head)	224.9	218.3	0.03	222.5	184.3	0.21	226.3	145.2	0.56	240.2	184.5	0.30	212.5	181.6	0.17	209.3	182.1	0.15	194.8	196	-0.01	199.8	213.7	-0.07	232.7	211.3	0.10	226.4	192.8	0.17	243.00	246.10	-0.01	228.1	250.1	-0.09
Over 30 month cows Dairy (p/kilo/lw)	84.7	58.4	0.45	81.2	85.2	-0.05	78.03	58.8	0.33	78.31	83.3	-0.06	71.21	75.1	-0.05	80	77.7	0.03	96.75	94.5	0.02	83.47	89.9	-0.07	90.03	97.5	-0.08	90.68	98.2	-0.08	87.18	99.50	-0.12	95.39	97.2	-0.02
Over 30 month cows Beef (p/kilo/lw)	102.4	74.4	0.38	101.59	106.1	-0.04	101.85	79	0.29	99.66	101.9	-0.02	83.02	94.5	-0.12	97	97.7	-0.01	110.83	112.9	-0.02	99.125	111.4	-0.11	126.68	117.9	0.07	125.41	119.0	0.05	126.04	117.40	0.07	116.51	114.8	0.01
Milk Price Average (p)	22.99	22	0.04	23.26	26.29	-0.12	24.05	27.01	-0.11	24.44	27.01	-0.10	24.87	27.08	-0.08	24.7	26.4	-0.06	24.67	25.56	-0.03	24.19	24.68	-0.02	24.08	24.37	-0.01	23.56	23.3	0.01	20.60	-1.00		22.4	-1.00	
Finished Lambs R3L (p/kilo/dw)	316.8	323.3	-0.02	316.1	286.1	0.10	323.4	300.5	0.08	310.3	293.2	0.06	353	269	0.31	383.2	280.4	0.37	421.3	343.1	0.23	424.3	372.1	0.14	413.4	376.2	0.10	415.6	392.3	0.06	429.30	415.10	0.03	429.3	428.8	0.00
Finished Lambs SQQ (p/kilo/lw)	138.1	143.3	-0.04	148.5	118.1	0.26	141.8	125.6	0.13	139.8	119.3	0.17	162.2	115.3	0.41	170.4	126.7	0.34	201.6	156	0.29	187.1	167.6	0.12	185.1	168.4	0.10	189.2	183.9	0.03	184.70	185.20	0.00	198.6	207.6	-0.04
Culled Ewes (£/head)	30	30.5	-0.02	40	32.6	0.23	34.58	28.3	0.22	37.84	25.7	0.47	44.32	27.7	0.60	56.85	32.0	0.78	81.22	43.2	0.88	58.51	46.6	0.26	67.33	53.6	0.26	75.32	54.3	0.39	70.75	59.80	0.18	64.95	57.8	0.12

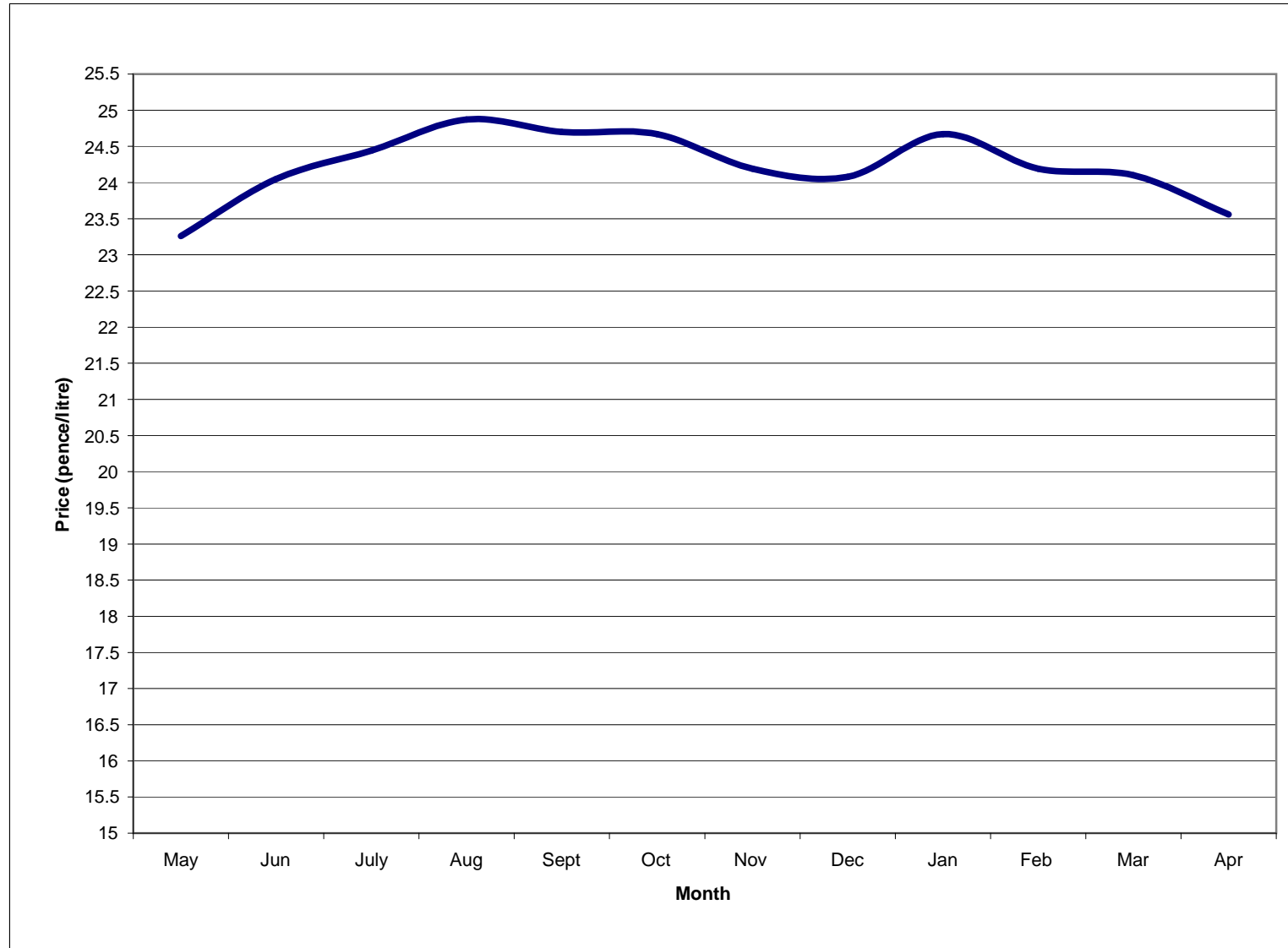
Arable



Source: Data taken from Farmers Weekly Publications. No liability can be accepted to third parties using this data.

Milk

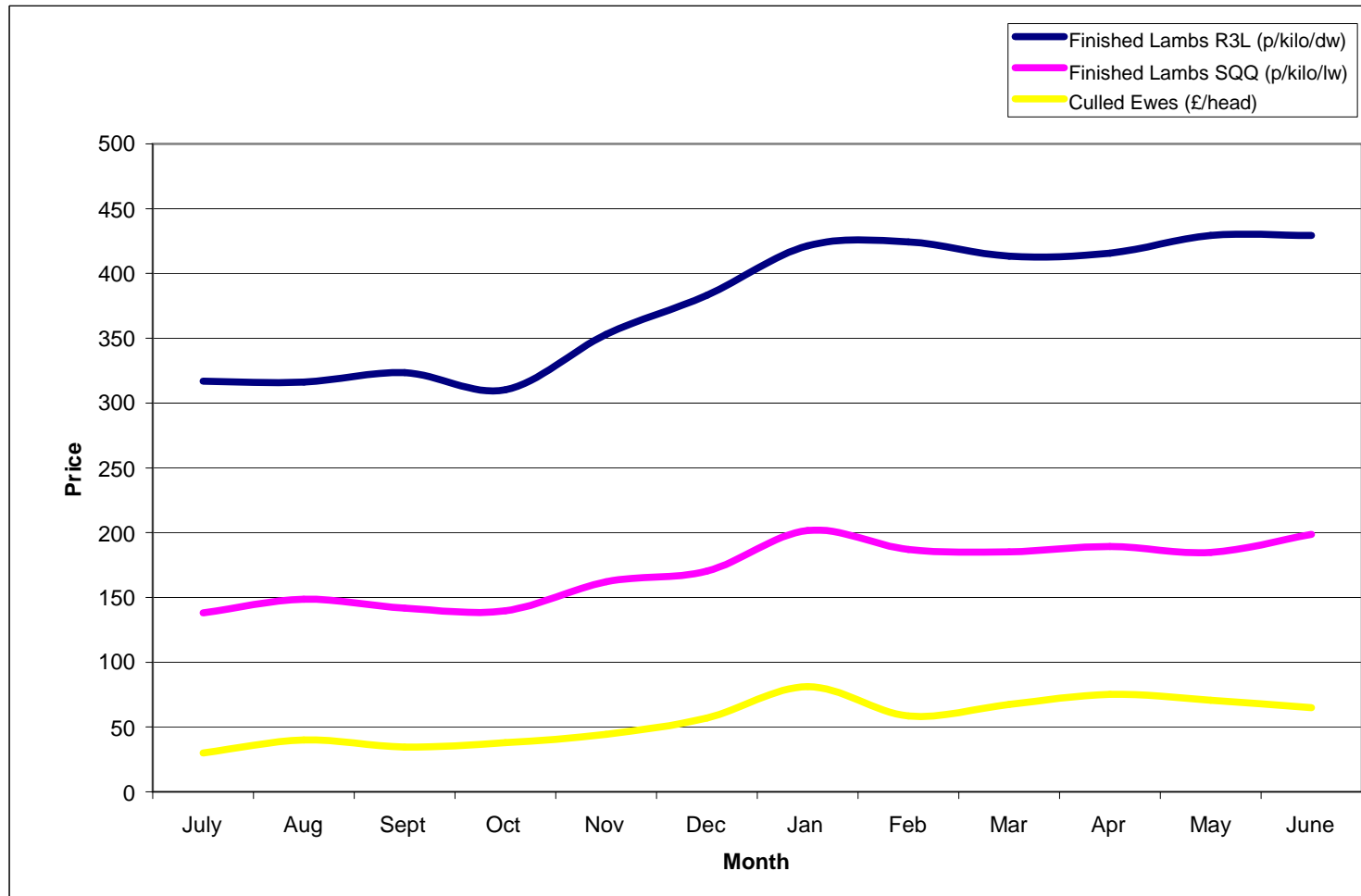
Type of Produce	2009					2010						
	May	Jun	July	Aug	Sept	Oct	Nov	Dec	Jan	Feb	Mar	Apr
Milk Price Average (p)	23.26	24.05	24.44	24.87	24.7	24.67	24.19	24.08	24.67	24.19	24.1	23.56



Source: Data taken from Farmers Weekly Publications. No liability can be accepted to third parties using this data.

Sheep

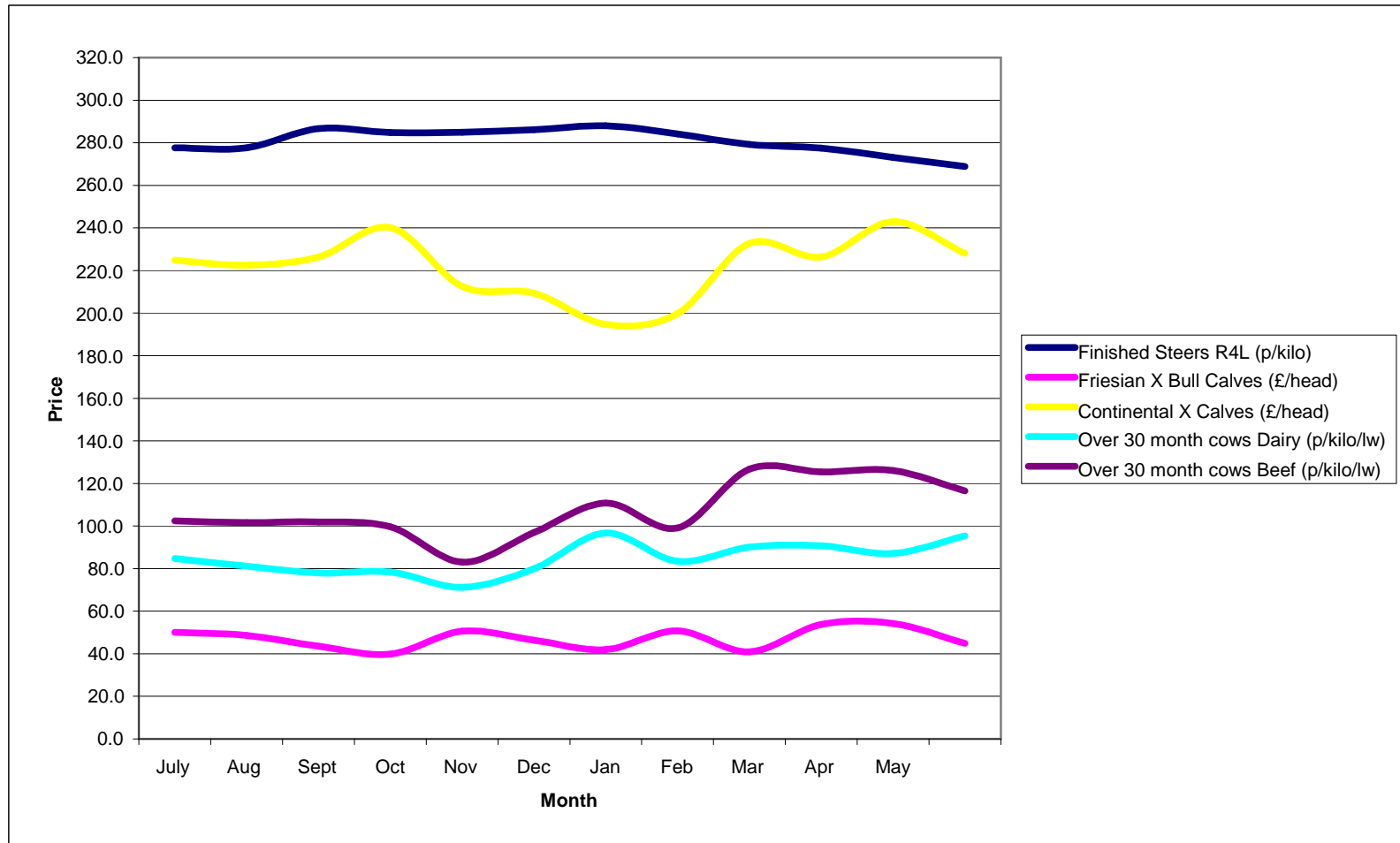
Type of Produce	2009											
	July	Aug	Sept	Oct	Nov	Dec	Jan	Feb	Mar	Apr	May	June
Finished Lambs R3L (p/kilo/dw)	316.8	316.1	323.4	310.3	353	383.2	421.3	424.3	413.4	415.6	429.3	429.3
Finished Lambs SQQ (p/kilo/lw)	138.1	148.5	141.8	139.8	162.2	170.4	201.6	187.1	185.1	189.2	184.7	198.6
Culled Ewes (£/head)	30	40	34.58	37.84	44.32	56.85	81.22	58.51	67.33	75.32	70.75	64.95



Source: Data taken from Farmers Weekly Publications. No liability can be accepted to third parties using this data.

Cattle

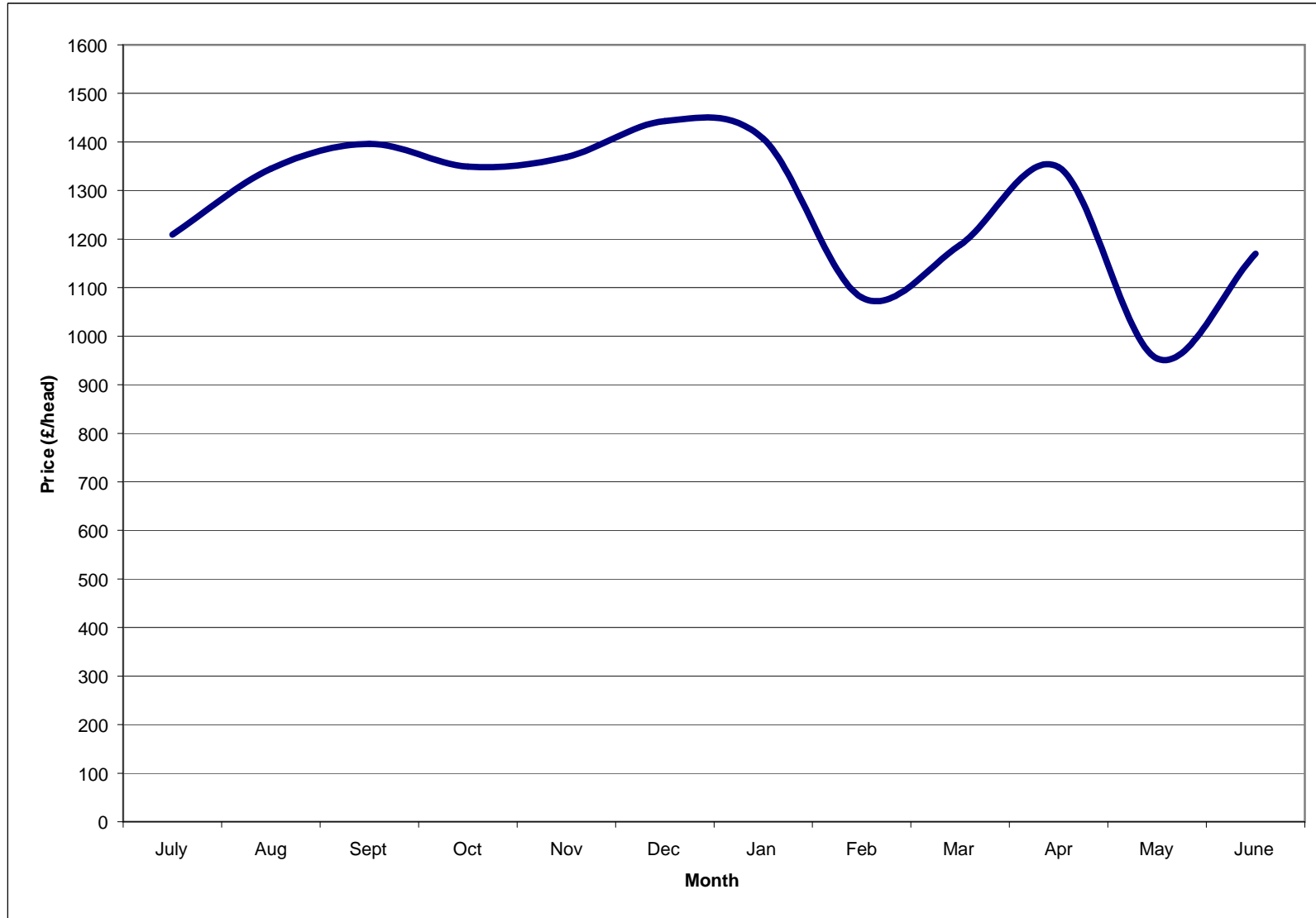
Type of Produce	2009											2010
	July	Aug	Sept	Oct	Nov	Dec	Jan	Feb	Mar	Apr	May	June
Finished Steers R4L (p/kilo)	277.6	277.6	286.6	284.8	284.9	286.1	288.0	284.2	279.2	277.5	273.1	268.9
Friesian X Bull Calves (£/head)	50.1	48.6	43.6	39.9	50.6	46.4	42.0	50.8	40.9	53.8	54.2	44.9
Continental X Calves (£/head)	224.9	222.5	226.3	240.2	212.5	209.3	194.8	199.8	232.7	226.4	243.0	228.1
Over 30 month cows Dairy (p/kilo/lw)	84.7	81.2	78.0	78.3	71.2	80.0	96.8	83.5	90.0	90.7	87.2	95.4
Over 30 month cows Beef (p/kilo/lw)	102.4	101.6	101.9	99.7	83.0	97.0	110.8	99.1	126.7	125.4	126.0	116.5



Source: Data taken from Farmers Weekly Publications. No liability can be accepted to third parties using this data.

Dairy

Type of Produce	2009											2010
	July	Aug	Sept	Oct	Nov	Dec	Jan	Feb	Mar	Apr	May	June
Dairy Cow (£/head)	1209	1345	1396	1349	1369	1443	1407	1080	1188	1348	954	1170



Source: Data taken from Farmers Weekly Publications. No liability can be accepted third parties using this data.

Monthly Summary

DENTON CLARK

	2009						2010					
	July	Aug	Sept	Oct	Nov	Dec	Jan	Feb	March	April	May	June
Feed Wheat (£/t)	89.5	84.2	83.7	93.2	100.0	98.2	99.8	91.9	88.3	92.0	99.8	93.6
Milling Wheat (£/t)	127.9	114.4	104.5	113.1	116.8	116.0	117.3	108.1	104.7	107.5	113.2	112.2
Feed Barley (£/t)	75.7	72.5	72.5	77.5	78.8	78.0	78.7	75.5	74.2	76.9	82.0	77.8
Oil Seed Rape (£/t)	203.2	214.4	211.0	222.2	232.9	233.0	231.4	232.8	245.5	254.5	259.5	265.6
Peas (£/t)	126.3	112.5	103.1	115.2	126.4	132.6	135.5	135.3	131.0	127.8	144.8	134.3
Beans (£/t)	126.3	113.2	106.8	115.2	126.4	132.6	135.5	135.3	131.0	130.5	146.1	135.7
Potatoes (£/t)	151.8	131.4	96.6	97.4	97.4	111.4	113.7	107.9	110.8	108.1	116.1	136.7
Finished Steers R4L (p/kilo)	277.6	277.6	286.6	284.8	284.9	286.1	288.0	284.2	279.2	278.3	273.1	268.9
Dairy Cow (£/head)	1209.0	1345.0	1396.0	1349.0	1369.0	1443.0	1407.0	1080.0	1188.0	1348.0	954.0	1170.0
Friesian X Bull Calves (£/head)	50.1	48.6	43.6	39.9	50.6	46.4	42.0	50.8	40.9	53.8	54.2	44.9
Continental X Calves (£/head)	224.9	222.5	226.3	240.2	212.5	209.3	194.8	199.8	232.7	226.4	243.0	228.1
Over 30 month cows Dairy (p/kilo/lw)	84.7	81.2	78.0	78.3	71.2	80.0	96.8	83.5	90.0	90.7	87.2	95.4
Over 30 month cows Beef (p/kilo/lw)	102.4	101.6	101.9	99.7	83.0	97.0	110.8	99.1	126.7	125.4	126.0	116.5
Milk Price Average (p)	23.0	23.3	24.1	24.4	24.9	24.7	24.7	24.2	24.1	23.6		
Finished Lambs R3L (p/kilo/dw)	316.8	316.1	323.4	310.3	353.0	383.2	421.3	424.3	413.4	415.6	429.3	429.3
Finished Lambs SQQ (p/kilo/lw)	138.1	148.5	141.8	139.8	162.2	170.4	201.6	187.1	185.1	189.2	184.7	198.6
Culled Ewes (£/head)	30.0	40.0	34.6	37.8	44.3	56.9	81.2	58.5	67.3	75.3	70.8	65.0

Source: Data taken from Farmers Weekly Publications.No liability can be accepted to third parties using this data.